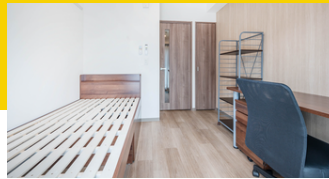


PROPERTY CODE: 13468

Dormy Nishishinjuku ドーミー西新宿



UNISEX



LOCATION

2-3-23 Kitashinjuku,
Shinjuku-ku, Tokyo 169-0074

ACCESS TO CAMPUS

- **Shinanomachi Campus:** 18 minutes by train
- **Mita Campus:** 43 minutes by train

ACCESS

- 8 minutes walk from Nishi-shinjuku station on the Tokyo Metro Marunouchi Line
- 10 minutes walk from Ookubo station on the JR Sobu Line
- 10 minutes from Nakano-sakaue station on the Tokyo Metro Marunouchi Line

Newly built and opening in April 2022.

Within walking distance to Shinjuku Station.

Student dormitory equipped with the latest facilities.

ROOM 16.80m²



Air conditioner / Wi-Fi in the room / LAN terminal for internet connection / Lighting / Curtain / Desk / Chair / Wardrobe (closet) / Bookcase (rack) / TV terminal / Bed ("sunoko" type) / 2-door refrigerator / Balcony / Bathroom toilet separate / Washing machine / Toilet with shower

FACILITY

Dining room / Kitchen corner (IH stove) / Lounge space / Laundry room (dryer only, washing machine in each room) / Delivery box / Wi-Fi (dining room)

ROOM FEES

Meals not included,
Facing north,1st floor

112,600 yen/mo

6 months:672,500 Yen
1 year: 1,338,000 Yen

Meals included,
Facing north,1st floor

130,200 yen/mo

6 months:776,500 Yen
1 year: 1,544,500 Yen

Meals not included,
Facing East,2nd-5th floor

118,600 yen/mo

6 months:696,500 Yen
1 year: 1,385,500 Yen

Meals included,
Facing East,2nd-5th floor

136,200 yen/mo

6 months:800,000 Yen
1 year: 1,592,000 Yen

Meals not included,
Facing north,1st floor

79,900 yen/mo

6 months:477,500 Yen
1 year: 949,500 Yen

Meals not included,
Facing north,1st floor

140,200 yen/mo

6 months:812,000 Yen
1 year: 1,614,000 Yen

OTHER FEES

- Electricity: 7,150 yen/mo
- Communication equipment: 3,960 yen/mo

MOVE-IN HANDLING FEES

- Key money: 100,000 yen
- Security deposit: 50,000 yen
- Maintenance fee: 6,000 yen/mo
- Building maintenance cost: 3,000 yen/year

Short-term use plan for international students [less than 90days]:

- Initial fees include an application fee of 10,000 yen and a building maintenance fee of 3,000 yen.
- Dormitory fee of 92,200 yen and communication equipment fee of 3,960 yen are for 30 days. The amount will vary depending on the number of days used.
- Renewal is allowed only once. If the number of days used exceeds 91 days, a separate room cleaning fee will be charged.

共立メンテナンス管理・運営

慶應義塾の学生寮

*This information is for international students as of September 2024. Please check <<https://internationaldormy.com/>> for the latest information.