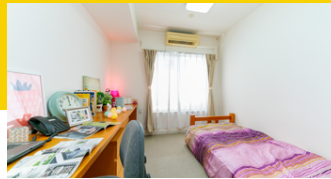


PROPERTY CODE: 13454

Dormy Akasaka ドーミー赤坂



WOMEN ONLY



LOCATION

4-13-22 Akasaka, Minato-ku,
Tokyo 107-0052

ACCESS TO CAMPUS

- **Shiba-Kyouritsu Campus:** 12 minutes by train
- **Mita Campus:** 15 minutes by train

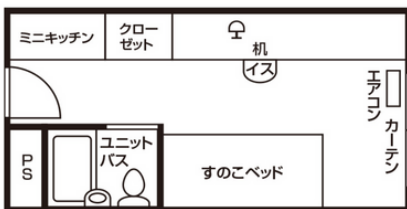
ACCESS

- 9 minutes walk from Akasaka-mitsuke station on the Tokyo Metro Marunouchi Line
- 8 minutes walk from Akasaka station on the Tokyo Metro Chiyoda Line
- 10 minutes from Tameike-sanno station on the Tokyo Metro Ginza Line
- 12 minutes from Nagatacho station on the Tokyo Metro Hanzomon Line
- 15 minutes from Aoyama1chome station on Tokyo Metro Ginza Line

This women-only dormy is located in a quiet, green environment in the heart of the city.

ROOM

16.80~21.10m²



Air conditioner / Wi-Fi in room / LAN terminal for internet connection / Lighting / Curtain / Desk / Chair / Wardrobe (closet) / Bookcase (rack) / TV terminal / Bed ("sunoko" type) / Mini-kitchen (electric stove)

FACILITY

Dining room / Laundry room / Outdoor drying area / Dining room Wi-Fi

ROOM FEES

Meals not included,
Facing north,1st floor

79,900 yen/mo

6 months:477,500 Yen
1 year: 949,500 Yen

Meals included,
Facing north,1st floor

97,500 yen/mo

6 months:582,500 Yen
1 year: 1,158,500 Yen

Meals not included,
Facing South,2nd-5th floor

84,900 yen/mo

6 months:507,000 Yen
1 year: 1,009,000 Yen

Meals included,
Facing north,2nd-5th floor

102,500 yen/mo

6 months:612,000 Yen
1 year: 1,218,000 Yen

Meals not included,
Reformed,2nd-5th floor

90,900 yen/mo

6 months:545,000 Yen
1 year: 1,080,000 Yen

Meals not included,
Facing north,1st floor

108,500 yen/mo

6 months:648,000 Yen
1 year: 1,289,000 Yen

OTHER FEES

- Electricity: Direct contract with power company
- Water charges : 1650 yen/mo
- Communication equipment: 3,960 yen/mo
- For meal plans, breakfast is 385 yen and dinner is 715 yen (calculated for each meal and billed the following month).

MOVE-IN HANDLING FEES

Key money:

- 1 year contract: 200,000 yen
- 2 year contract: 280,000 yen
- 3 year contract: 330,000 yen
- 4 year contract: 360,000 yen

Security deposit: 50,000 yen

Maintenance fee: 268,000 yen/year

Building maintenance cost: 3,000 yen/year

共立メンテナンス管理・運営
慶應義塾の学生寮

*This information is for international students as of September 2024. Please check <<https://internationaldormy.com/>> for the latest information.